



*jas*  
connect to source

THE PREMIUM B2B SHOW  
5-6-7 JULY 2024  
— JECC, SITAPURA, JAIPUR —



**SHRI BALAJI EXIMS**

AN ISO 9001:2015, 14001:2015, 18001:2015 CERTIFIED COMPANY

AN ISO 9001:2015, 14001:2015, 18001:2015 CERTIFIED COMPANY

4m x 3m = 12 Sqmtr

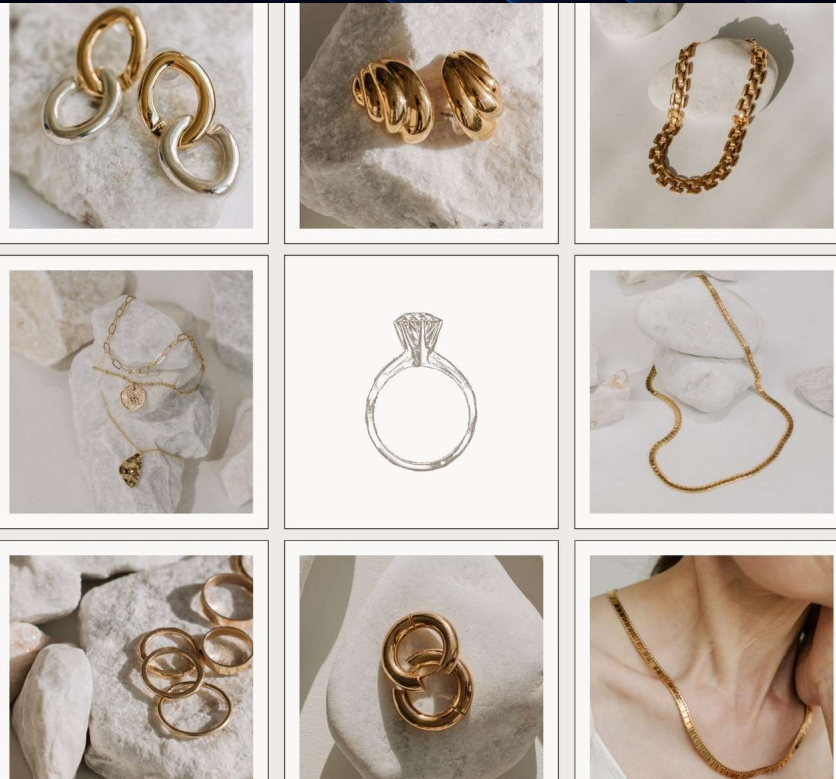
# JEWELLERY STALL

By



**SHRI BALAJI EXIMS**

AN ISO 9001:2015, 14001:2015, 18001:2015 CERTIFIED COMPANY



# JEWELLERY STALL

4m x 3m = 12 Sqmtr



**Stall Inclusions :**  
Tall Glass – 2 No's  
Top Glass – 3 No's  
Chair – 3 No's  
Table – 1 No's  
Waste Paper Bin – 1 No's  
Power Socket – 1 No's  
Track Light – 6 No's  
Facia Name – As per Plan

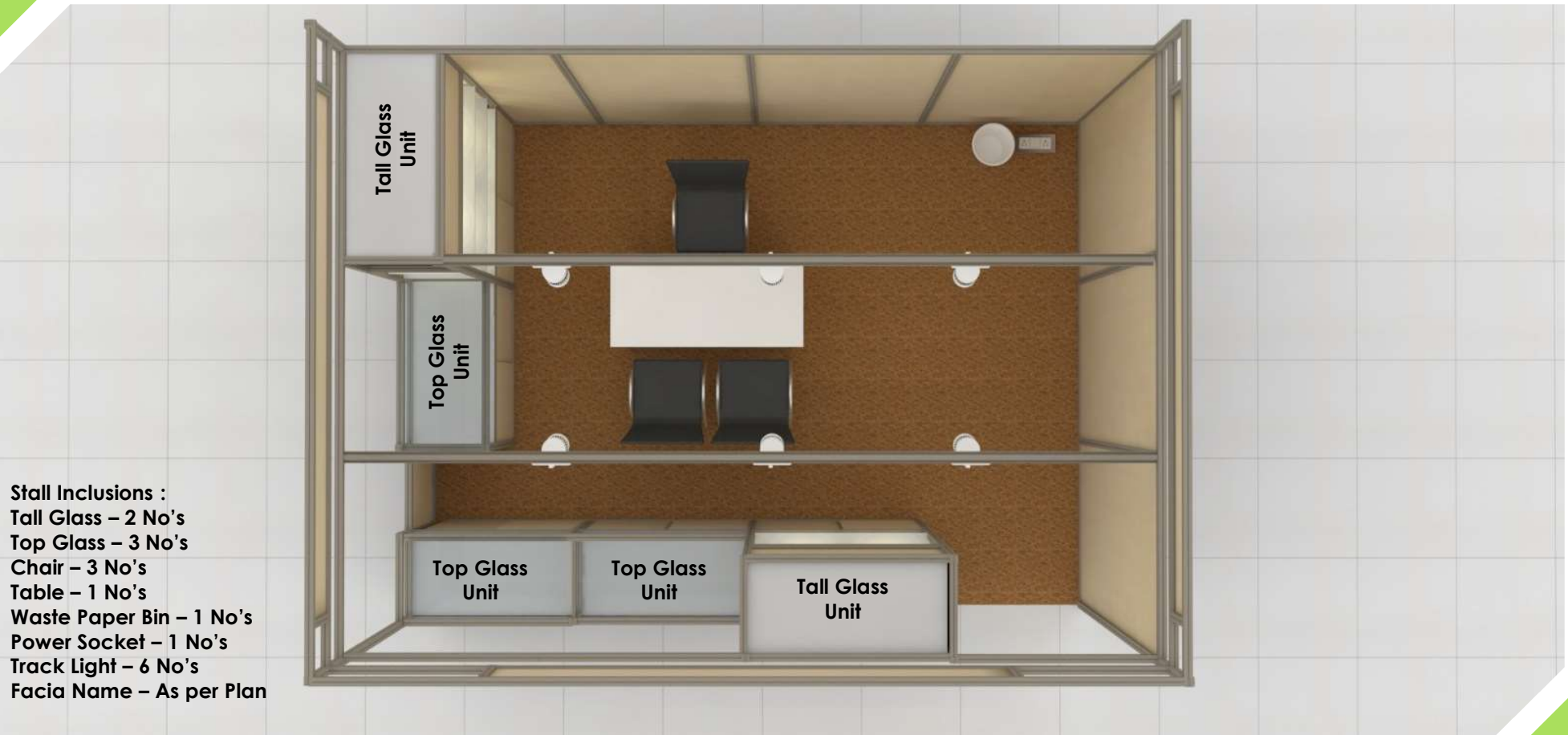
# JEWELLERY STALL

4m x 3m = 12 Sqmtr



# JEWELLERY STALL

4m x 3m = 12 Sqmtr



- Stall Inclusions :**  
Tall Glass – 2 No's  
Top Glass – 3 No's  
Chair – 3 No's  
Table – 1 No's  
Waste Paper Bin – 1 No's  
Power Socket – 1 No's  
Track Light – 6 No's  
Facia Name – As per Plan

# TEAM BALAJI

Amith Mittal

Email: [info@shribalajixims.com](mailto:info@shribalajixims.com)

**Corporate office:** E- 3, Dhawandee Building, 6, Jantar Mantar Road, New  
Delhi – 110001

[www.shribalajixims.com](http://www.shribalajixims.com)

