

*jas*  
connect to source

THE PREMIUM B2B SHOW  
5-6-7 JULY 2024  
— JECC, SITAPURA, JAIPUR —



**SHRI BALAJI EXIMS**

AN ISO 9001:2015, 14001:2015, 18001:2015 CERTIFIED COMPANY



AN ISO 9001:2015, 14001:2015, 18001:2015 CERTIFIED COMPANY

8m x 3m = 24 Sqmtr

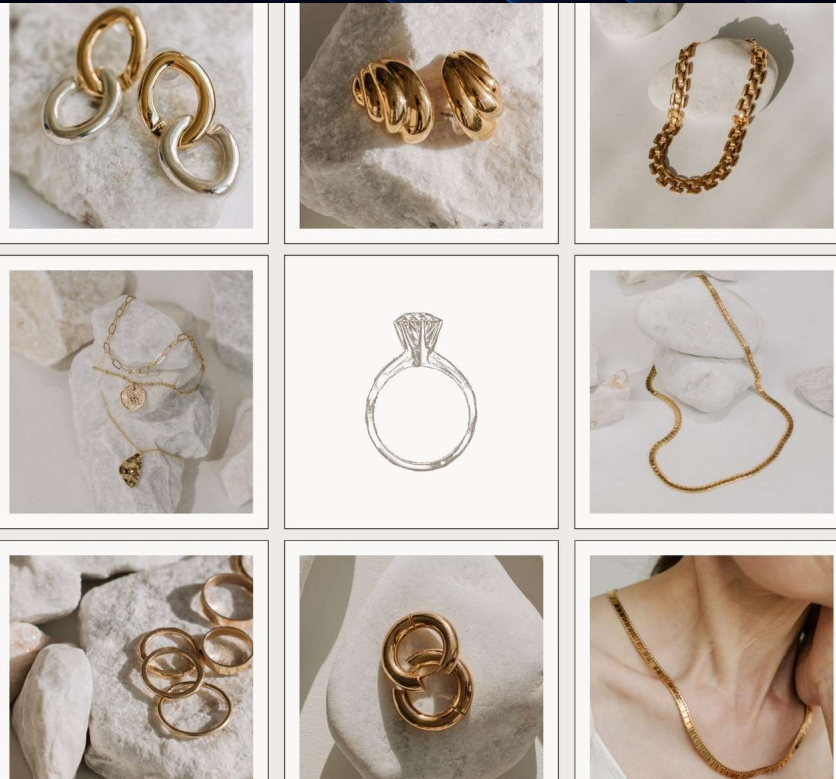
# GEMSTONE STALL

By



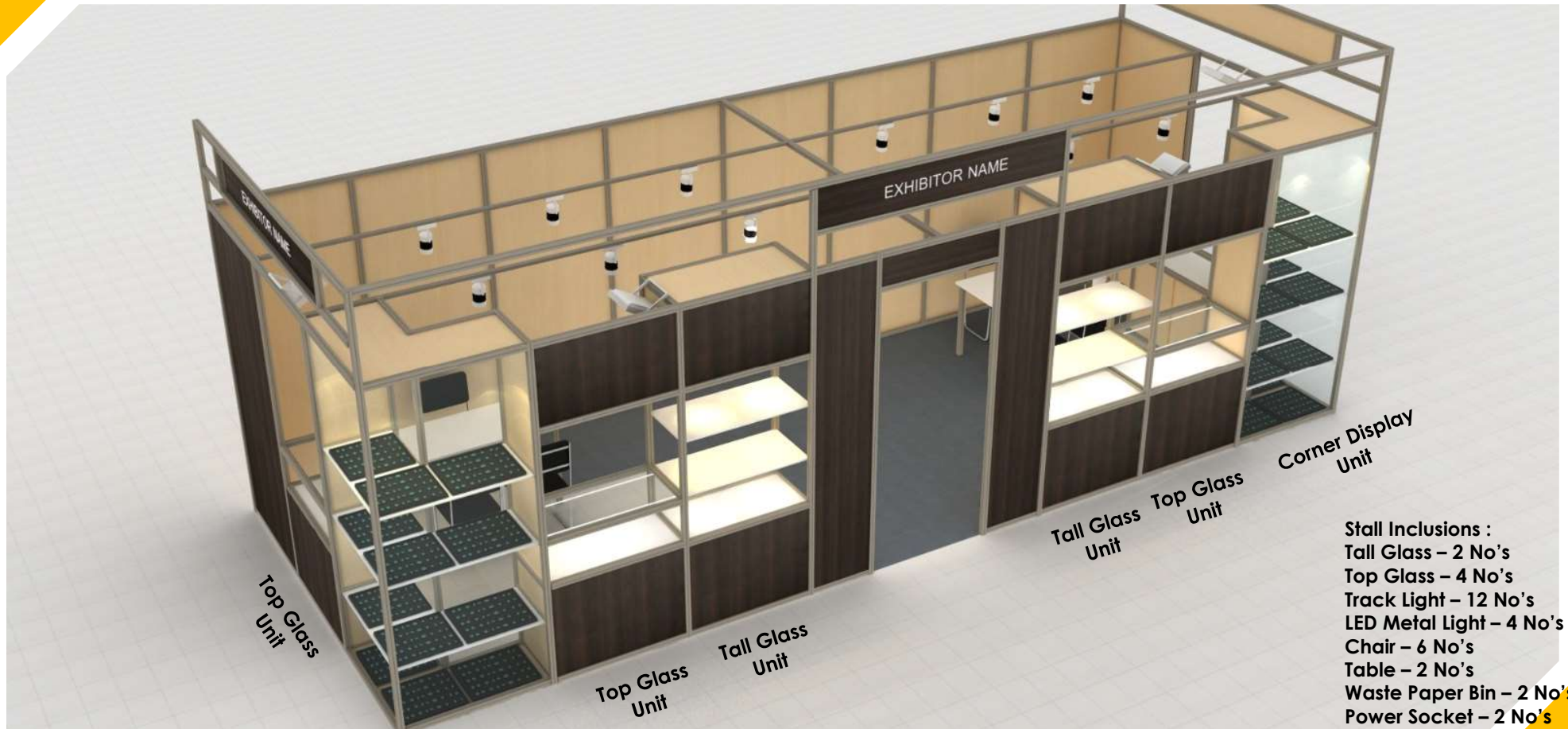
**SHRI BALAJI EXIMS**

AN ISO 9001:2015, 14001:2015, 18001:2015 CERTIFIED COMPANY



# GEMSTONE STALL

8m x 3m = 24 Sqmtr



Corner Display Unit

- Stall Inclusions :
- Tall Glass – 2 No's
  - Top Glass – 4 No's
  - Track Light – 12 No's
  - LED Metal Light – 4 No's
  - Chair – 6 No's
  - Table – 2 No's
  - Waste Paper Bin – 2 No's
  - Power Socket – 2 No's
  - Facia Name – As per Plan

# GEMSTONE STALL

8m x 3m = 24 Sqmtr



# GEMSTONE STALL

8m x 3m = 24 Sqmtr

Top Glass Unit

Top Glass Unit

Corner Display Unit

Tall Glass Unit

Tall Glass Unit

Corner Display Unit

Top Glass Unit

Top Glass Unit

**Stall Inclusions :**  
Tall Glass – 2 No's  
Top Glass – 4 No's  
Track Light – 12 No's  
LED Metal Light – 4 No's  
Chair – 6 No's  
Table – 2 No's  
Waste Paper Bin – 2 No's  
Power Socket – 2 No's  
Facia Name – As per Plan

# TEAM BALAJI

Amith Mittal

Email: [info@shribalajixims.com](mailto:info@shribalajixims.com)

**Corporate office:** E- 3, Dhawandee Building, 6, Jantar Mantar Road, New  
Delhi – 110001

[www.shribalajixims.com](http://www.shribalajixims.com)

